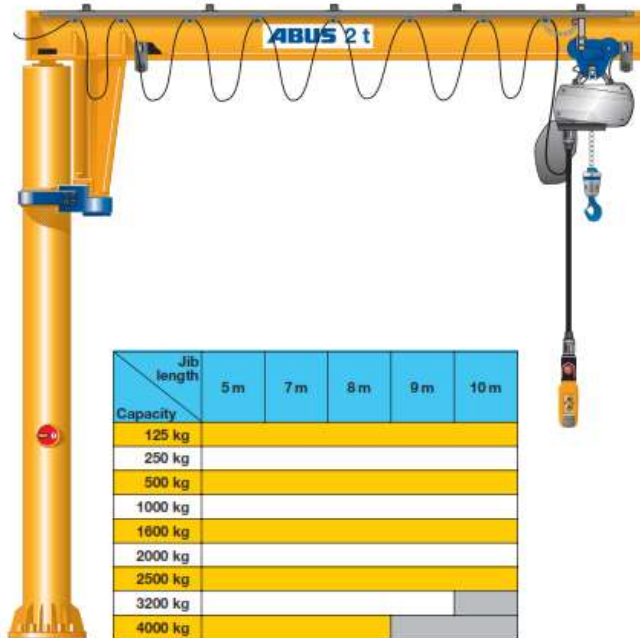




→) depending on load capacity

ABUS Pillar jib crane VS

An all-around performer



Jib length \ Capacity	5m	7m	8m	9m	10m
125 kg	Yes				
250 kg	Yes				
500 kg	Yes				
1000 kg	Yes				
1600 kg	Yes				
2000 kg	Yes				
2500 kg	Yes				
3200 kg	Yes				No
4000 kg	Yes			No	

Capacity: to 4 t
Jib length: to 10 m →)

with electric chain hoist

- light heavyweight design (DIN 15018 H2/B3)
- sturdy, steel construction with low-build profile section jib arm for optimised hook height
- safety anchoring with heavy-duty ribbed pillar base
- easy installation of hoist trolley due to removable jib end plate and adjustable clamping buffers
- electrical system incl. slip-rings

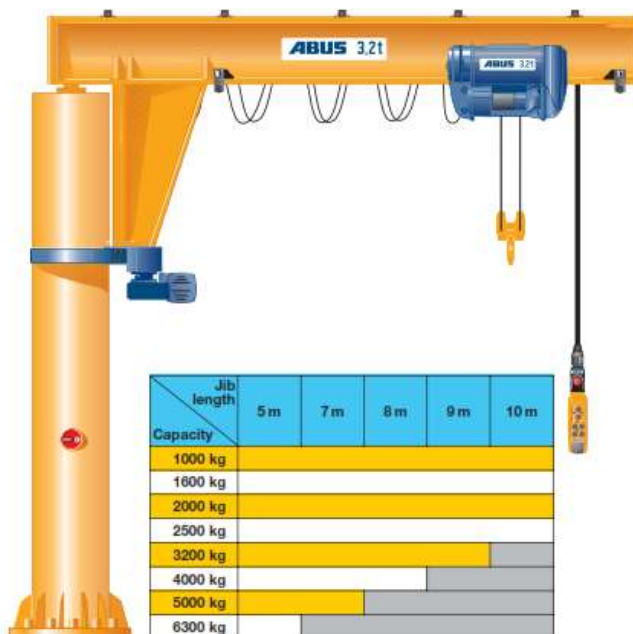


Fig.: VS with optional configurations (electric slewing gear and mobile control unit)

Capacity: to 6.3 t
Jib length: to 10 m →)



→) depending on load capacity



Jib length \ Capacity	5m	7m	8m	9m	10m
1000 kg	Yes				
1600 kg	Yes				
2000 kg	Yes				
2500 kg	Yes				
3200 kg	Yes				No
4000 kg	Yes			No	
5000 kg	Yes		No		
6300 kg	Yes	No			

with electric wire rope hoist

- light heavyweight design (DIN 15018 H2/B3)
- sturdy, steel construction with low-build profile section jib arm for optimised hook height
- safety anchoring with heavy-duty ribbed pillar base
- easy installation of wire rope hoist trolley due to removable jib end plate and adjustable clamping buffers
- electrical system incl. slip-rings
- powered trolley, 2-speed
- powered slewing, 2-speed
- mobile control runs length of jib